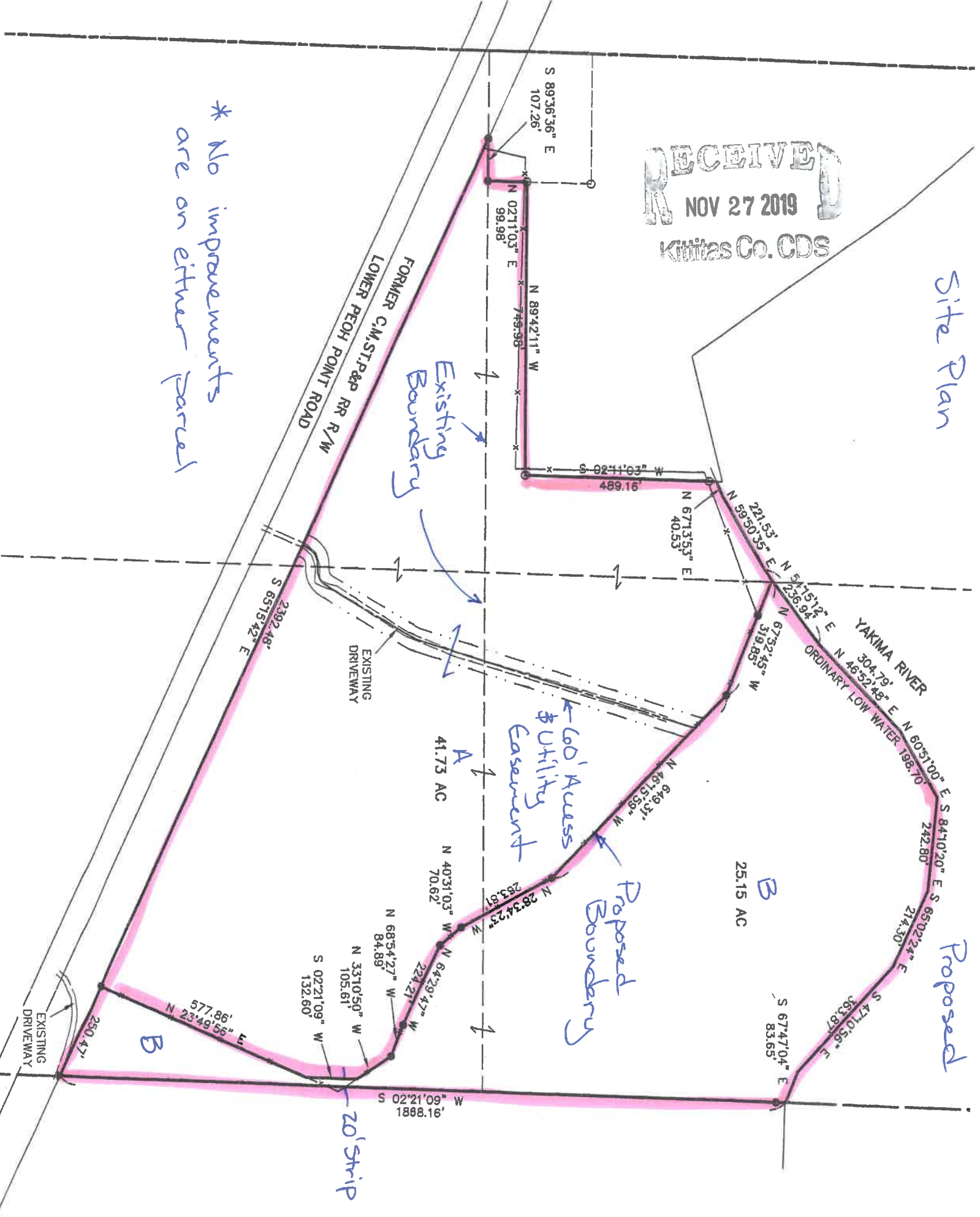


RECEIVED
NOV 27 2019
Kittitas Co. CDS

Site Plan

* No improvements
are on either parcel



Existing Boundary

Proposed Boundary

Proposed

20' strip

God's Access
Utility Easement

A
41.73 AC

B
25.15 AC

LOWER PEOPH POINT ROAD
FORMER C.M. ST. P&P RR R/W

YAKIMA RIVER
ORDINARY LOW WATER 198.70

EXISTING DRIVEWAY

EXISTING DRIVEWAY

S 02°21'09" W 1888.16'

N 23°49'56" E 577.86'

S 02°21'09" W 132.60'

N 105.61'

N 84.89'

N 224.21'

N 64.29'47" W

N 28.34'23" W

N 283.61'

N 40.31'03" W 70.62'

N 46.13'39" W

N 649.31'

N 319.85' W

N 67.52'45" W

N 256.94'

N 5.15'12" E

N 221.53' E

N 59.50'35" E

S 02°11'03" W 489.16'

N 89°42'11" W 749.98'

N 02°11'03" E 99.98'

S 89°36'36" E 107.26'

S 67°47'04" E 83.65'

S 47°10'56" E 363.87'

S 65°02'24" E 214.30'

S 84°10'20" E 242.80'

S 80°51'00" E 198.70'

N 46°52'48" E 304.79'

N 60°51'00" E

N 46°52'48" E

N 304.79' E

N 60°51'00" E

N 46°52'48" E

N 304.79' E

N 60°51'00" E

N 46°52'48" E

N 304.79' E

N 60°51'00" E

N 46°52'48" E

N 304.79' E

N 60°51'00" E

N 46°52'48" E

N 304.79' E

N 60°51'00" E

N 46°52'48" E

N 304.79' E

N 60°51'00" E

N 46°52'48" E

N 304.79' E

N 60°51'00" E

N 46°52'48" E

N 304.79' E

N 60°51'00" E

N 46°52'48" E

N 304.79' E

N 60°51'00" E

N 46°52'48" E

N 304.79' E

N 60°51'00" E

N 46°52'48" E

N 304.79' E

N 60°51'00" E

N 46°52'48" E

N 304.79' E

N 60°51'00" E

N 46°52'48" E

N 304.79' E

N 60°51'00" E

N 46°52'48" E

N 304.79' E

N 60°51'00" E

N 46°52'48" E

N 304.79' E

N 60°51'00" E

N 46°52'48" E

N 304.79' E

N 60°51'00" E